



Connecting to Tributary Mill Conservancy Cameras

First put the IP address in your trusted sites:

1. Click Start then select Control Panel
2. Select Internet Options
3. Select Security Tab
4. Click Trusted Sites
5. Click Sites
6. Unmark require server verification
7. Add this website <http://75.145.253.134/> press OK
8. After adding the address, mark require server verification

Next, connect to Internet:

1. After you home page has successfully loaded, type the address <http://75.145.253.134/> into the address bar
2. Press enter
3. At this point you may encounter an ACTIVE X Window, if so, click on allow active x. (You may have to disable pop up blockers from your firewall software(s).) Then download the active X. More information can be found at <http://support.microsoft.com/kb/912945>
4. If successful to this point, you should see the pop-up shown in Figure 1. If so, mark the button 'Mpeg4 Encoder Viewer' button and click on 'submit'.

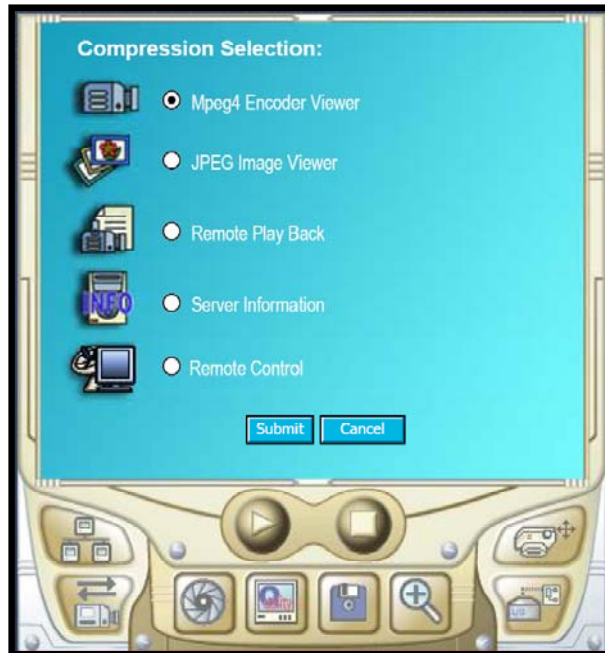


Figure 1 - Compression Selection

5. The next pop-up allows you to choose your internet connection type (Figure 2). This will determine the number of cameras that you can see at one time based on connection speed (bandwidth).



Figure 2 - Internet Connection

6. Select the appropriate connection for your computer. Remember, the larger the bandwidth, the more capability with this program. Then click on submit.
7. You will be asked if you want to download a .cab file. Click Yes/download.

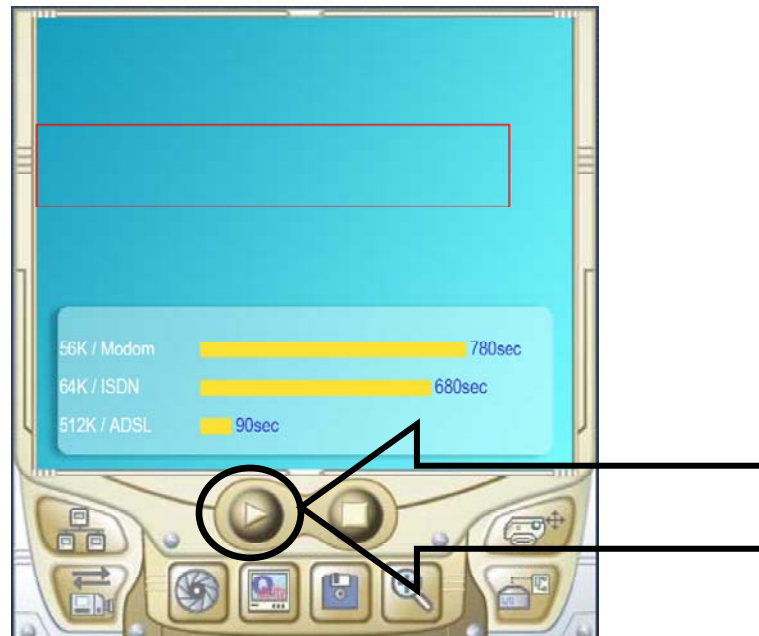


Figure 3 – Download Mpeg4

8. Next click on the Triangular Play button (Figure – 3). You will be prompted for a user name and password.

For access to camera control:

At this point you will be prompted for your user name and password. Camera control capability is reserved for select user groups. Users with active studies at the TMC have the highest priority. User names and passwords can be obtained by clicking on the request username and password text on the right side of the Live Video page on the TMC web site. Once you have obtained your user name and password, continue with the log in.

9. Write your Username and password provided, click – submit.
10. The camera view shown in Figure 4 will appear. The camera icon will allow you to select cameras 1-4 or with higher bandwidth connections, you can access all online cameras. If you have control access, the four arrow icon will allow you to access the Pan, Tilt and Zoom controls.

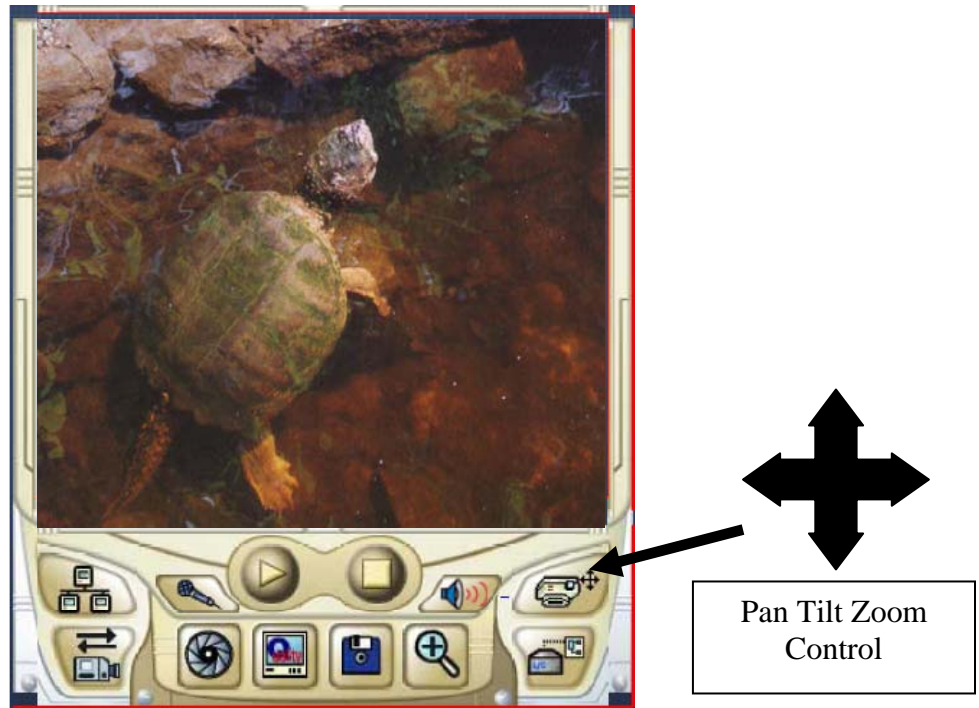


Figure 4 – Live View

Key - Letter	U (up)
	L (left)
	R(right)
	D (Down)
	Z (zoom)
	F(focus)

When you are done press stop. Close the window.